



EXACO (S) Pte Ltd

SURVEY VISION



- EXACO aims to be the preferred choice in Industry and Marine Survey and Inspections, providing reliable and quality services to meet or to exceed our clients' requirements and expectations.
- Our Services includes Industrial, Marine and Offshore Survey and Consultancy Services which include Survey Inspection. Qualitative and Quantitative Surveys and Designs.
 - Specific projects of EXACO Consultancy includes:
 - .Damage survey inspection.
 - .Qualitative and Quantitative surveys / reports
 - .Drydock specification and inspection.
 - .Store/Warehouse Inspection to meet local authority requirements.
 - .Insurance / Marine Inspections.
 - .Port Statutory Inspections and Surveys.
 - .Computer Aided Designs and Naval Architects.
 - .Steelwork specifications and repair inspections.
- We endeavor towards quality performance & continuous improvement in all our services, able to be most competitive, responsive and efficient.





EXACO (S) Pte Ltd

Approved by Major International Classifications



- *American Bureau of Shipping - Approved*
- *ISO 9002 Certified by ABS Quality Inc*
- *Lloyds Register of Shipping - Approved*
- *Det Norske Veritas - Approved*
- *Bureau Veritas - Approved*
- *Germanischer Lloyd - Approved*
- *Registro Italiano Navale - Approved*
- *China Classification Society - Approved*
- *Nippon Kaiji Kyokai - Approved*



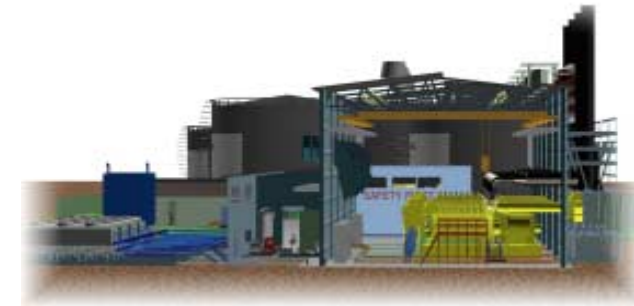


EXACO (S) Pte Ltd SERVICES



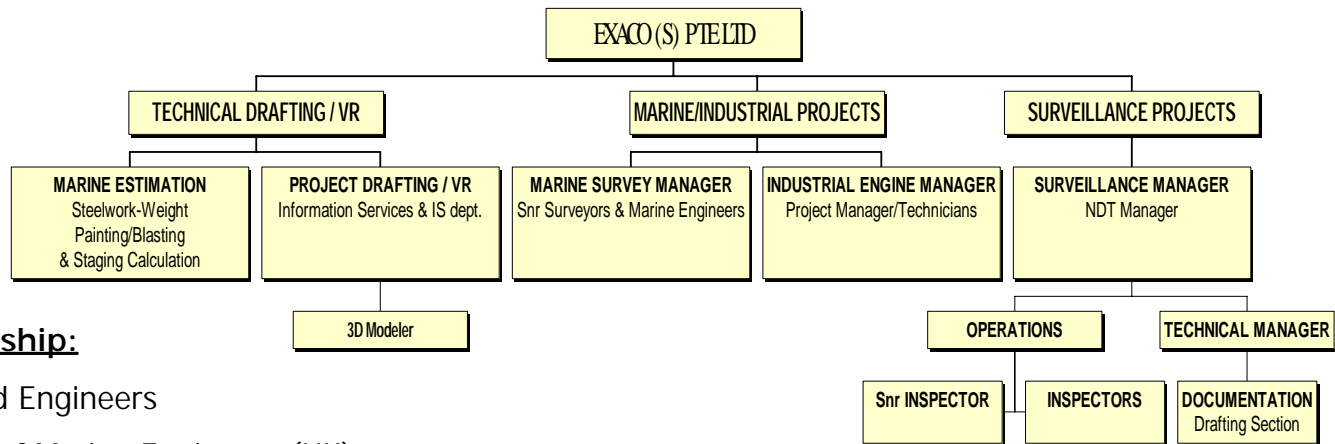
EXACO (S) PTE LTD Services include

- INDUSTRIAL / MARINE SURVEYS, VALUATION & INSPECTION.
- INTERNET SURVEY REPORT SUBMISSION (MPEG / AVI / ASF WIN FORMAT)
- ENGINEERING EVALUATIONS / GRAPHICS COMMUNICATION (ANIMATIONS)
- MARINE NON-DESTRUCTIVE TEST SERVICES.
- ULTRASONIC THICKNESS GAUGING.
- WAREHOUSE / WORKSHOP SURVEY INSPECTIONS
- SHIP SURVEILLANCE SERVICES.
- INDUSTRIAL PROJECT MANAGEMENT.
- GRAPHICS COMMUNICATIONS. CAD DRAFTING.
- ELECTRONIC LASER DISTANCE MEASUREMENT.





EXACO (S) Pte Ltd Organization



Membership:

Chartered Engineers

Institute of Marine Engineers (UK)

The Engineering Council

Singapore Welding Society

American Society of Non-Destructive Testing

Society of Naval Architects & Marine Engineers

Licensed Appraisers

Society of Manufacturing Engineers

Institute of Industrial Engineers

Certified Welding Inspectors (AWS)



EXACO (S) Pte Ltd

Industrial & Marine Surveyors



■ MARINE TECHNICAL INSPECTION SERVICES

- P & I, Hull & Machinery Condition Surveyors
- Charter's & Owner's On & Off Hire Surveyors
- Maritime Investigators
- Expert Witness
- Valuation and Pre-Purchase Surveyors for all types of vessels
- ISO / ISM Consultants
- Licensed Appraisers
- Contract Projects / Dry Docking & Ship Repair Managers
- Computer Drafting - Ships Plan / Drawings



USK 7 S

USK 7 B





EXACO (S) Pte Ltd

Survey Inspections



TO MEET YOUR STATUTORY SURVEY

REQUIREMENTS, **EXACO SURVEYS**
SURVEILLIANCE EXPERIENCED INSPECTION TEAMS.



- ASTN Qualified.
- ABS Class Approved.
- Point of Survey datalogger
- Point of Survey video / quantitative picture captures (for internet transmission)
- Krautkramer calibrated UT machines.
- Fully equipped with safety gears and equipment, including dinky for voyage inspections.
- Inspection per Classification requirements or Owners' Specification.
- Steel and non-ferrous materials gauging and testing
 - Application: Hull structures, Tanks internals, Bottom plates, Bell mouth areas,
 - Turbochargers housing, Tailshafts keyway, threads, IG and Cargo pipes.
- MPT and NPI.
- CAD drafting print reports.



EXACO (S) Pte Ltd

Marine Valuations



Industrial and Marine Valuation is a complex interplay between tax regulations, provision in the owner's books, financial result of the product / ship or fleet, performance of the commodity and the ever important Market value.

EXACO LICENCED APPRAISAL

EXPERIENCED INSPECTION TEAMS review following prior issue Certificate of Valuation.

- Market Value: Highest Price ordinary seller may obtain and lowest price buyer will pay.
- Dividend Value: Assess future earning of the product / vessel.
- Expectation Value: Special product / vessel built for specific client / trade.
- Replacement Value: (Savage Value) Equipment cost with deduction for fair wear and tear
- Liquidation Value: Forced sale of products / ships.

Pricing.

Type/Size/Age/Class Condition/Speed/Oil Consumption/Cargo Space/Refrigerated Machinery.
Institute of Shipping Economics and Logistics (bi-monthly publication)

5 International Business Park. Informatics Building. Singapore 609914



EXACO (S) Pte Ltd

Inspections



■ INDUSTRIAL & MARINE SURVEILLANCE SERVICES

- Ultrasonic Thickness Measure
- Quantitative datalogging. Qualitative Visual Inspection & Measurement
- Hull Visual Inspection & Reporting
- Steel Weight Estimation
- Repair Recommendation
- Structural Conditional Assessment
- Voyage Inspection
- Pipe Continuous Scanning
- Pipe Internal Inspection (Rat-Patrol)
- Boiler-Tube Continuous Scanning
- Bottom Pitting Inspection
- Magnetic Particle Inspection
- Dye Penetrant Inspection
- Valves and Fittings Inspection
- Superintendency

USK 7 S

USK 7 B





EXACO (S) Pte Ltd

Project Management



- **LV and MV Project Management**
- **Project Engineering**
 - Project Planning and Scheduling
 - Materials Management
- **Site Commissioning**
- **Assembly and Power Plant Layout Drawings**
- **Engineering Graphics Animations (CDROM)**
- **Technical Drawings**
 - Process Piping
 - General Layout
 - Process Flow Charts
 - Structural Steel Detailing
 - Mechanical Details and Assemblies
- **3D Power Plant Layout and General Arrangement.**



Clients (short list)



- Institute of London Underwriters
- Marine Drilling Incorporate
- Tanker Pacific Shipping Co.
- HSBC Insurance
- Jurong Shipyard Limited
- P & I Clubs
- Charterers
- NOL
- TNB - Malaysia
- Ocean Marine
- Singapore Navy
- Far East Levingston
- Petroleum Corporation of Singapore
- BHP Petroleum
- AT & T
- Freight Link-Piow Hong Crane
- Tiong Woon Transportation
- Tractors Singapore Limited
- Favell Falco
- McDermott SEA Pte Ltd
- Ship Agents
- Shipbrokers
- Insurance Brokers
- Insurance Companies
- Power Generation Contractors
 - John Brown
 - Siemens
 - Caterpillar
 - Mitsui
 - Toshiba



Benefits in Engaging EXACO



- **Peace of Mind**
- **Field Proven with Designers and Site Personals**
- **Integrated Scope of Industrial & Marine & Offshore Services**
 - Stand Alone Execution Lump Sum Projects
 - Combined Execution with Main Contractor & Sub-Con
 - Support Services (Drafting, Inspections, Technical Documentation Assistance)
- **Strong Engineering & Project Management Teams**
- **Qualified Industrial & Marine Surveillance Inspection Teams**
 - CWI / UT / MPT / Hull Inspection
 - Voyage Inspection / Boiler Inspection / Pipes Inspection
- **Responsiveness (24 hours duty) & Quick Reports Submission**
- **Market Driven**



THANK YOU

for your time with us.

Contacting US:



EXACO (S) Pte Ltd

Marine, Offshore & Industrial Surveyors

5 International Business Park, Informatics Building, Singapore 609914

Tel: 65 5603 777. Hline: 96862 777

Fax: 65 5606 776

<http://www.post1.com/~exaco>

exaco@post1.com



INDUSTRIAL & MARINE-OFFSHORE INSPECTORS SURVEYORS.

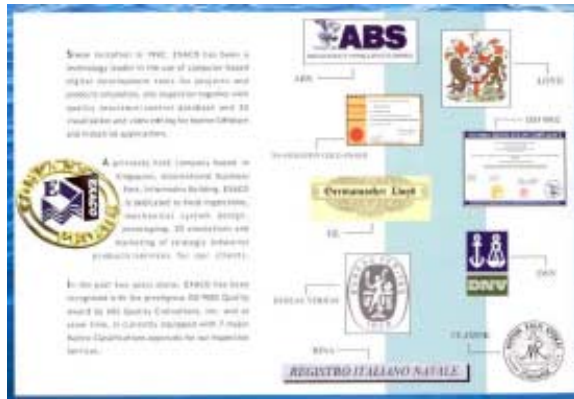
Established since 1992.
 All reports / survey inspections in digital files and formats.
 Records safekeeping: 5 years
 Internet access (clients) via ID and password.

APPROVED BY:

7 MAJOR INTERNATIONAL CLASSIFICATION SOCIETIES.

ISO 9002 CERTIFIED.

LICENCED APPRAISERS OF SINGAPORE.



Work for the best.
 Be the Best.
 Committed to *Quality*

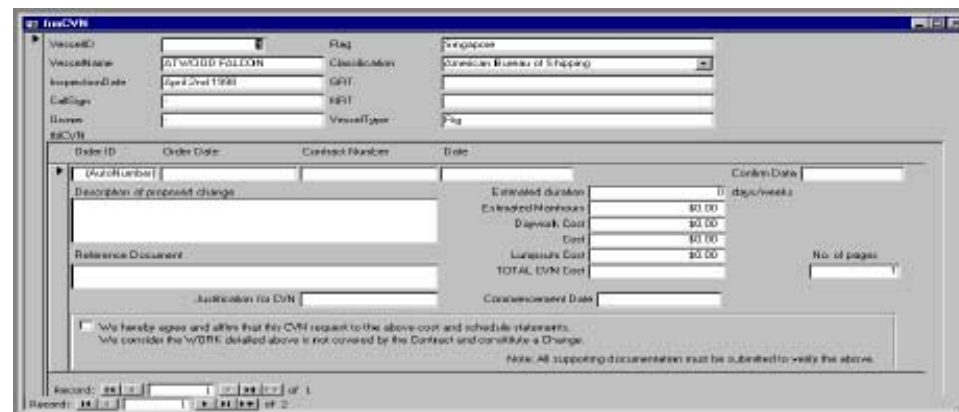
EXACO (SINGAPORE) INDUSTRIAL & MARINE SURVEY SERVICES.
 ISO 9002 CERTIFIED BY AMERICAN BUREAU OF QUALITY INC.





INVENTORY, QUALITATIVE AND QUANTITATIVE SURVEYS REPORTS:

- a. Database digital format (with visual graphics)
- b. Submission via CD and Internet / Hardcopies.
- c. Date/Time stamped.



VESSEL KEY EQUIPMENT INVENTORY LIST (ENGINEERS)

Vessel Name	Classification	American Bureau of Shipping
ATWOOD FALCON	GRT	
Call Sign	NRT	
Class	Vessel Type	Rig
Singapore		

Inspection Date: April 2nd 1998

Key Equipment / Inventory List during Inspection (Engine Rooms)

Equipment	Quantity	Manufacturer	Model	Serial No.	Rating	Equipment Type	Remarks
Alarm	1						Hours
Welder handle	2						Recommendation
Eye protector	2	Goggles					Recommendation
Fireman Alarm							Recommendation
Clock	1						Recommendation
12" TV colour	1	Tandem					Recommendation
Fridge (small)	1	AQUA					Recommendation
Fan	1						Recommendation
Cabinet	2	Fair crew	effects				Recommendation

